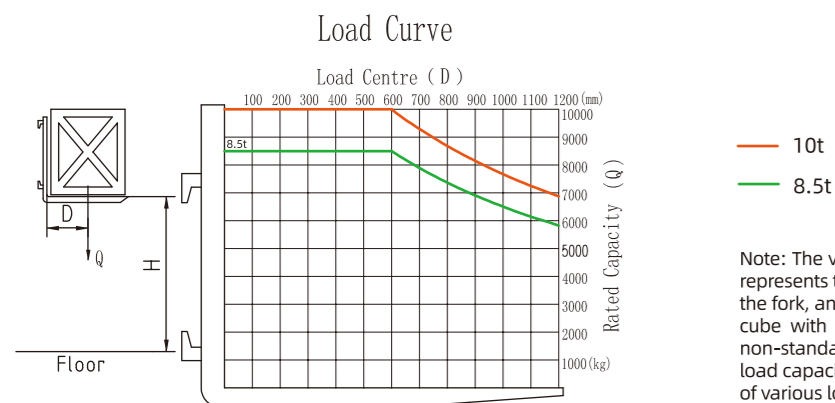


Configuration Option Sheet

LG Series 8.5-10t

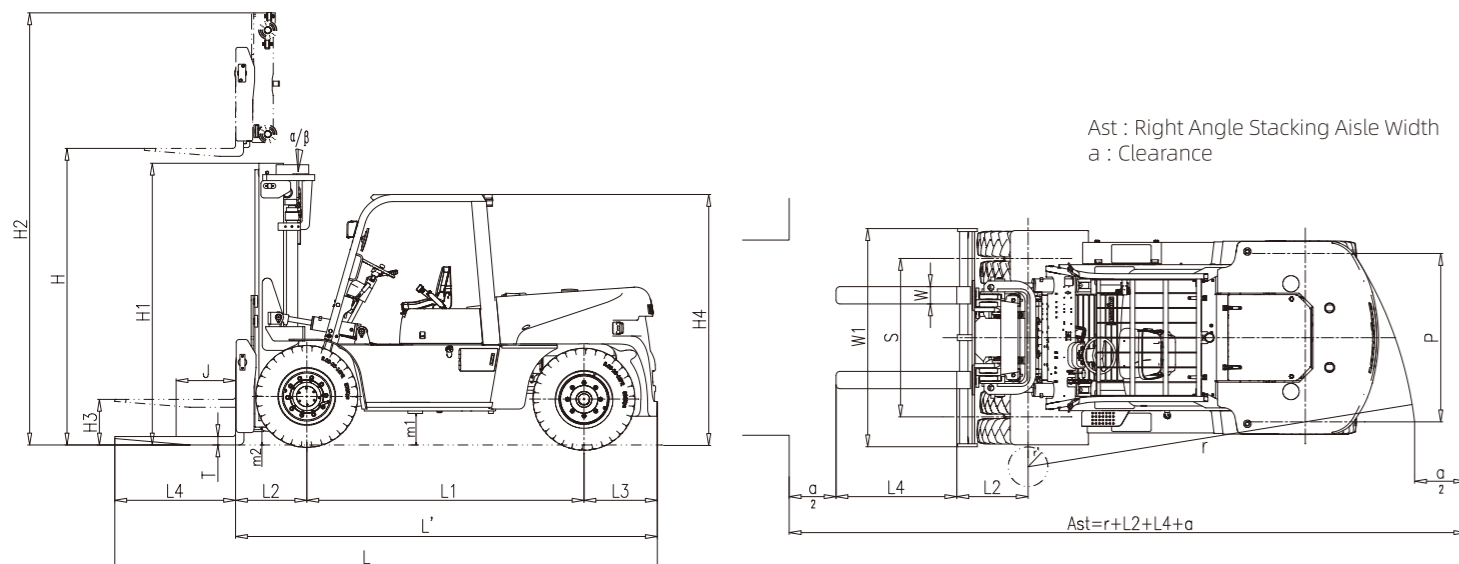
| | | | | | |
|---------------|---|--|---------------------------------|--------------------------------|---------------------------------|
| Configuration | Overhead Guard | Roof Weather Canopy | Pedal Rubber | Semi-suspension Seat | Automatic Shift |
| | Warning Light | Wide view mast(2 Stage) | Backrest | Standard Forks | Multi Function Display |
| | Working Hour Meter | Oil Content Meter | Water-thermometer | Charging Indicator | Neutral Position Switch |
| | Power Master Switch | Fuel Cap with Lock | Oil Pressure Warning | Electric Horn | Full Set of LED Lights |
| | Reversing Buzzer | Key Shutoff Device | Tilt-adjustable Steering Column | Lift, Tilt, Levers | Two-piece Multiplex Valve(8.5T) |
| | Four-piece Multiplex Valve(10T) | Fully-hydraulic Power Steering | Tilting Cylinder Latching Valve | Transmission Oil Filter | Torque Converter Oil Dipstick |
| | Push-button Parking | Traction Pin | Tool Box | Balanced Weight Heat Sink | |
| Optional | Solid Tyres | Cabin | Suspension Seat | Heater | Front Windscreen |
| | Rear Working Light | High Level Exhaust | Double Air Filter | Oil Bath Air Filter | Driving OPS |
| | Full Set OPS (Including drive and lift) | Torque Converter Oil Temperature Alarm | Reversing Voice Horn | Overspeed Alarm,10km/h | Electric Fan |
| | Sound-light Alarm | Cold A/C | Fire Extinguishing Muffler | Widen Fork Carriage | Fork Extensions |
| | Tilt cylinder protection | Steering cylinder protection | Custom Colours | Multiple Hydraulic Attachments | |

Load Curve



Note: The vertical axis represents the rated lifting weight, and the horizontal axis represents the load center distance. The load center is calculated from the front of the fork, and the base point of the standard load refers to the center position of a cube with a load side length of 1000 mm. When the mast is tilted forward, non-standard forks are used, or loads exceeding the normal width are loaded, the load capacity will be reduced. Through the load curve chart, the carrying capacity of various load centers can be understood in time.

Structure Diagram



LONKING

LONKING



8.5-10t

LG series Internal Combustion Counterbalance Forklift Truck



LONKING HOLDINGS LIMITED
LONKING (SHANGHAI) FORKLIFT SALES CO.,LTD.

Add:196.Xinrun Road,Xinqiao,Songjiang Industrial,Zone Shanghai
Sales Hot-Line:+86-21-37602160 sales hotline:+86-400-021-6969
Fax:+86-21-61303339-8195 E-mail:cfw@lonking.cn
http://www.lonking.cc P.C:201612



OHSAS45001:2023



ISO14001:2015



ISO9001:2015



CE CERTIFICATE



UKCA CERTIFICATE

Good Heat Dissipation

Cooling system is reasonable optimized, which improves cooling performance significantly. Thus improving reliability and durability of key components such as gearbox and engine.

Lowering Energy Consumption

Optimized design of load sensing hydraulic system reduces vehicle fuel consumption effectively.

Operating Comfort

Adopted interactive ergonomic design to improve operating comfort. Equipped with wide field of view mast to improve driver's field of view.

Intelligent Reversing

Electronic reversing system. Easy to operate and labor-saving. Upgrade new intelligent shift system, prevent the second gear starting, ensure reliability of gearbox.

Convenient Maintenance

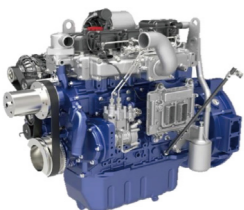
Interior space of car body is more spacious. Parts positions are more reasonable. Opening angle of hood is increased to 80°. Maintainability of machine is better.

High Reliability

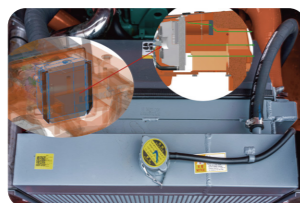
Strength of the core structural parts of car body, mast and hood has been enhanced greatly to make whole vehicle more solid.



Product details and advantages



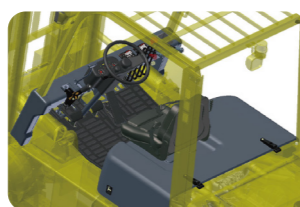
Using high-pressure common rail engine (CHN IV), Bosch high-pressure multiple injection technology, power performance is significantly improved, and the smoke emission is lower.



The whole machine has a large internal space, reasonable layout of parts, good heat dissipation performance and higher efficiency.



Wide-view mast improves safety in stacking operations.



Adopt interactive ergonomic design to effectively improve operating comfort.

Overall Specifications

LG Series 8.5-10t

| Character | | | | | |
|-------------------------------|--|-----------|------|-----------------------------|-------------|
| 1.01 | Manufacturer | LONKING | | | |
| 1.02 | Model | LG85DTIII | | LG100DTIII | |
| 1.03 | Power type | Diesel | | | |
| 1.04 | Rated capacity | Q | kg | 8500 | 10000 |
| 1.05 | Load center | J | mm | 600 | |
| Dimensions | | | | | |
| 2.01 | Max. height (with backrest) | H2 | mm | 4246 | 4400 |
| 2.02 | STD Max lifting height | H | mm | 3000 | 3000 |
| 2.03 | Overhead guare height | H4 | mm | 2560 | 2560 |
| 2.04 | Overall length (with fork) | L | mm | 5465 | 5780 |
| 2.05 | Wheelbase | L1 | mm | 2500 | 2800 |
| 2.06 | Front overhang | L2 | mm | 705 | 720 |
| 2.07 | Rear overhang | L3 | mm | 740 | 740 |
| 2.08 | Min ground clearance (Chassis/Mast) | m1/m2 | mm | 300/245 | 300/245 |
| 2.09 | Overall width (outside) | W1 | mm | 2165 | 2165 |
| 2.10 | Fork adjustment range | | mm | 420-1950 | 450-2090 |
| 2.11 | Fork size(STD) | | mm | 1520×170×70 | 1520×175×85 |
| 2.12 | Front wheel tread | S | mm | 1600 | 1600 |
| 2.13 | Rear wheel tread | P | mm | 1700 | 1700 |
| 2.14 | Min turning radius(outside) | r | mm | 3650 | 3900 |
| 2.15 | Min aisle width for pallet 1000x1200,crossways | Ast | mm | 6075 | 6340 |
| 2.16 | Min aisle width for pallet 800x1200.lengthways | Ast | mm | 6075 | 6340 |
| Tyres | | | | | |
| 3.01 | Capital W (F/R, X=Driven wheels) | | | X=4/2 | |
| 3.02 | Tyres type (F/R) | | | Pneumatic | |
| 3.03 | Tyres size,front | | | 9.00-20-14PR | |
| 3.04 | Tyres size,rear | | | 9.00-20-14PR | |
| Performance and other details | | | | | |
| 4.01 | Max. travelling speed,loaded/unloaded | | km/h | 24/28 | 24/28 |
| 4.02 | Lifting speed, loaded/unloaded | | mm/s | 390/420 | 330/350 |
| 4.03 | Lowering speed,loaded/unloaded | | mm/s | 420/410 | 310/300 |
| 4.04 | Max. traction force(loaded) | | KN | 60 | 60 |
| 4.05 | MAX. gradeability,loaded/unloaded | | % | 23/20 | 21/20 |
| 4.06 | Service weight(with oil & water) | | kg | 11870 | 13250 |
| 4.07 | Axle load, F/R(loaded) | | kg | 18270/2100 | 21000/2250 |
| 4.08 | Axle load, F/R(unloaded) | | kg | 5220/6650 | 6000/7250 |
| 4.09 | Service brake | | | Power brake -pedal | |
| 4.10 | Parking brake | | | Mechanical-hand brake lever | |
| 4.11 | Transmission type | | | Automatic | |
| 4.12 | Gear NO.(F/R) | | | 2/2 | |
| 4.13 | Fuel tanke capacity | | L | 120 | |
| 4.14 | Battery (voltage/ capacity) | | V/Ah | 2x12/90 | |

Engine Optional

LG Series 8.5-10t

| Optional engines | | | | | | | |
|------------------|--------------------|------------------|----------------|---------------------|--------------------------------|------------------|------------------|
| Engine model | Displacement | Manufacturer | Rated power | Max. torque(Nm/rpm) | Bore/cylinder No./displacement | Fuel concumprion | Applicable model |
| CA6110/125G2 | CHN II | XICHAI | 85kw/2000rpm | 450/1400-1500 | 110/6/7.127 | 230kg/kw.h | 8.5-10t |
| CA4DF3-12GCG3U | CHN III | XICHAI | 85kw/2200rpm | 460/1400-1500 | 110/4/4.75 | 220kg/kw.h | 8.5-10t |
| YC4A125-T300 | CHN III | YUCHAI | 92kw/2200rpm | 480/1600-1800 | 108/4/4.85 | / | 8.5-10t |
| 6BG1-NAABD-03-C2 | Euro I | ISUZU | 82.4kW/2000rpm | 416.8/1500 | 105/6/6.494 | 232kg/kw.h | 8.5-10t |
| WP4.1G125E302 | CHN III | WEICHAI | 92kw/2200rpm | 480/1400-1600 | 105/4/4.09 | / | 8.5-10t |
| QSB4.5-C110-30 | CHN III//Euro IIIA | DONGFENG CUMMIUS | 82kw/2200rpm | 480/1500 | 107/4/4.5 | / | 8.5-10t |
| YCA05115-S500 | Euro V | YUCHAI | 85kw/2000rpm | 500/1300-1500 | 108/4/4.837 | 202kg/kw.h | 10t |

Mast Specifications

| Mast Type | Mast Model | H2 Max Lifting Height (mm) | Load Capacity (j=500mm) (kg) | | H1 Lowered Mast Height(mm) | | H3 Free Lifting Height (mm) | | Mast Tilting Angle(°)α/β | | | | |
|--|------------|----------------------------|------------------------------|------------|----------------------------|------------|-----------------------------|------------|--------------------------|------------|------|-------|-------|
| | | | LG85DTIII | LG100DTIII | LG85DTIII | LG100DTIII | LG85DTIII | LG100DTIII | LG85DTIII | LG100DTIII | | | |
| 2 Stage Standard Mast-Super Wide Field | M230 | 2300 | / | 10000 | / | 2495 | 200 | 215 | / | 10/12 | | | |
| | M250 | 2500 | / | | 2445 | / | | | / | | | | |
| | M270 | 2700 | | | 2545 | 2695 | | | | | | | |
| | M300 | 3000 | | | 2695 | 2845 | | | | | | | |
| | M330 | 3300 | 8500 | 10000 | 2845 | 2995 | | | 10/12 | 10/12 | | | |
| | M350 | 3500 | | | 2945 | 3095 | | | | | | | |
| | M375 | 3750 | | | 3070 | 3220 | | | | | | | |
| | M400 | 4000 | | | 3245 | 3395 | | | | | | | |
| | M425 | 4250 | | | 3370 | 3520 | | | | | | | |
| | M450 | 4500 | | | 3495 | 3645 | | | | | | | |
| | M475 | 4750 | 8200 | | 3620 | 3770 | | | 6/6 | 6/6 | | | |
| | M500 | 5000 | 8200 | | 3745 | 3895 | | | | | | | |
| | M550 | 5500 | 7850 | 9000 | 4045 | 4195 | | | | | | | |
| | M600 | 6000 | 7400 | 8000 | 4295 | 4445 | | | | | | | |
| 2 Stage Free Mast | ZM200 | 2000 | 8500 | 10000 | 2345 | 980 | 995 | 10/12 | 10/12 | | | | |
| | ZM225 | 2250 | | | 2470 | 1105 | 1120 | | | | | | |
| | ZM250 | 2500 | | | 2595 | 1230 | 1245 | | | | | | |
| | ZM270 | 2700 | | | 2695 | 1330 | 1345 | | | | | | |
| | ZM300 | 3000 | | | 2845 | 1480 | 1495 | | | | | | |
| | ZM330 | 3300 | | | 2995 | 1630 | 1645 | | | | | | |
| | ZM350 | 3500 | | | 3095 | 1730 | 1745 | | | | | | |
| | ZM370 | 3700 | | | 3195 | 1830 | 1845 | | | | | | |
| | ZM400 | 4000 | | | 3395 | 2030 | 2045 | | | | | | |
| | ZM425 | 4250 | | | 3520 | 2155 | 2170 | | | | | | |
| | ZM450 | 4500 | | | 3645 | 2280 | 2295 | | | 6/6 | 6/6 | | |
| | ZSM360 | 3600 | | | 7500 | 8000 | 2545 | | | 1180 | 1195 | 10/12 | 10/12 |
| | ZSM400 | 4000 | | | | | 2675 | | | 1310 | 1325 | | |
| | ZSM435 | 4350 | | | | | 2795 | | | 1430 | 1445 | | |
| ZSM450 | 4500 | 2845 | 1480 | 1495 | | | | | | | | | |
| ZSM480 | 4800 | 7500 | 2945 | 1580 | | | 1595 | | | | | | |
| ZSM500 | 5000 | 7500 | 3010 | 1645 | | | 1660 | | | | | | |
| ZSM540 | 5400 | 7000 | 3200 | 1835 | | | 1850 | | | | | | |
| ZSM600 | 6000 | 6000 | 6400 | 3400 | | | 2035 | 2050 | | | | | |
| ZSM630 | 6300 | 5800 | 5800 | 3500 | | | 2135 | 2150 | | | | | |
| ZSM650 | 6500 | 5500 | 5800 | 3565 | | | 2200 | 2215 | | | | | |

Note: Load capacity is reduced 500kg with optional side shifter for 8.5-10t forklift.